

GENERAL LOCK

— STOREFRONT —

INDEX:

ADB and AHB Series Mortise Lock

Applications	K:1
Standard Features	K:1
Dimensions	K:1

ADL Series MS Lock

Applications	K:2
Standard Features	K:2
Dimensions	K:2

AP1 Series Push/Pull Paddle

Applications	K:3
Standard Features	K:3
Dimensions	K:3

AL1 Series Lever Handle

Applications	K:3
Standard Features	K:3
Dimensions	K:3

AFB Series Flushbolt

Applications	K:4
Standard Features	K:4

AEXIN Series Lock Indicator

Applications	K:5
Dimensions	K:5
Message Panel	K:5
Material/Finish	K:5

How to Order - Nomenclature

Mortise Locks and Accessory Hardware	K:6
--	-----

TERMS AND CONDITIONS:

Copyright: © 2011 General Lock LLC. All text, graphics, photographs, and any selection, coordination, and arrangement of such materials contained herein is copyrighted and owned by General Lock. No material from this catalog may be copied, reproduced, republished, uploaded, posted, transmitted, or distributed in any way unless permission has been expressly granted by General Lock and any reproduction of this catalog, in whole or in part, and/or any information or materials contained in it is prohibited without the express authorization of General Lock. General Lock is a trademark or registered trademark of General Lock. ANY MATERIALS OR INFORMATION PROVIDED BY GENERAL LOCK IN THIS CATALOG IS PROVIDED "AS IS" WITHOUT WARRANTY OF ANY KIND, EITHER EXPRESSED OR IMPLIED, INCLUDING, BUT NOT LIMITED TO, THE IMPLIED WARRANTIES OF MERCHANTABILITY, FITNESS FOR A PARTICULAR PURPOSE, OR NON-INFRINGEMENT. GENERAL LOCK ASSUMES NO RESPONSIBILITY FOR ERRORS OR OMISSIONS IN THIS CATALOG, OR OTHER PUBLICATION OR OTHER DOCUMENTS, WHICH ARE REFERENCED BY THIS PUBLICATION.

All other brand names or product names, including Arrow, Best, Corbin-Russwin, Falcon, Kwikset, KSP, Sargent, Schlage, Weiser, and Yale, referenced herein are trademarks, registered trademarks, service marks, or trade names of the respective manufacturers of such products and are owned by their respective holders.

General Lock reserves the right to make changes in designs and specifications, to make addition or improvements on its products or to discontinue products without incurring any obligation. General Lock is not responsible for modification, addition or alteration to our products by others. Products may not appear as shown.

General Lock warrants only to Buyer that the products will be free from defects in material and workmanship for a period of 12 months from the date of shipment of the products unless a longer period is specified. This warranty does not cover wear and tear and shall be ineffective and shall not apply to products that have been subjected to misuse or abuse, neglect, accident, damage, or improper installation, or maintenance. Buyer's sole and exclusive remedy under these warranties will be limited to, at General Lock's sole option and expense, refund of the purchase price of, or the repair or replacement for of, the products or parts thereof which General Lock reasonably determines do not conform with these warranties. Buyer will inspect the products upon delivery and will promptly notify General Lock in writing of any defect in the products.

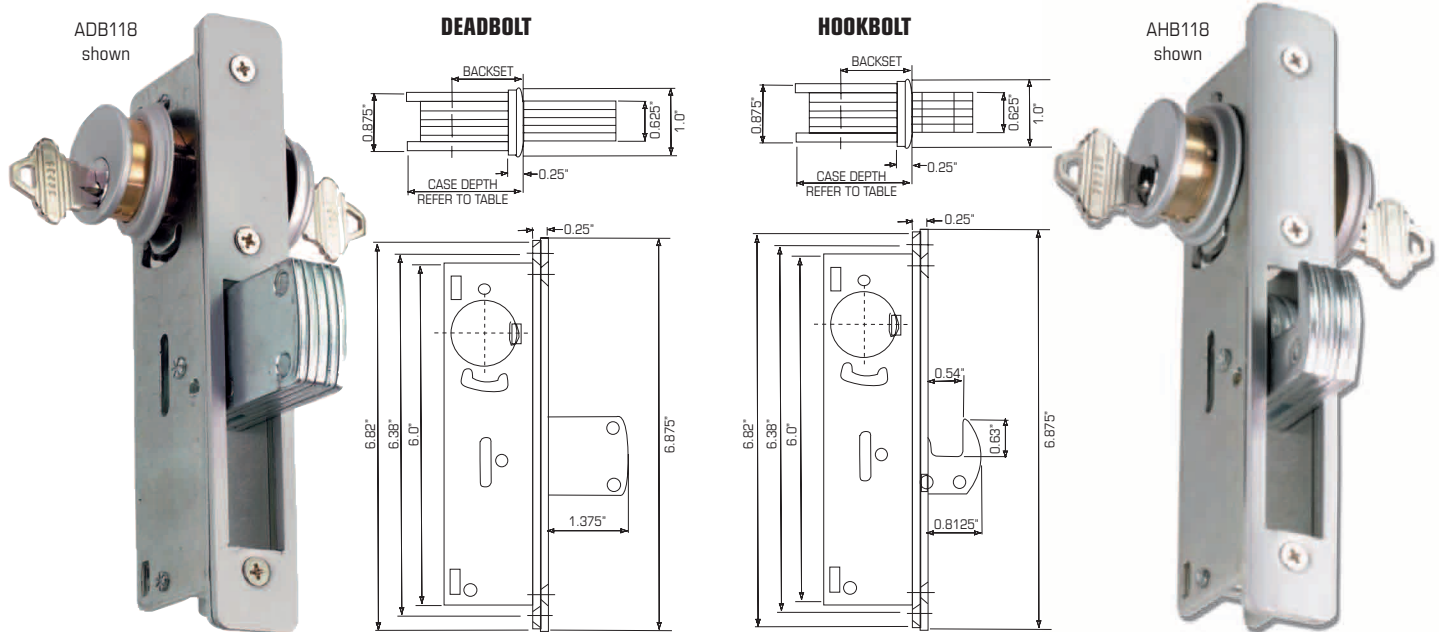
DISCLAIMER OF WARRANTIES: THE FOREGOING WARRANTIES ARE EXCLUSIVE AND IN LIEU OF, AND GENERAL LOCK DISCLAIMS AND BUYER WAIVES, ALL OTHER WARRANTIES OF MERCHANTABILITY, FITNESS FOR A PARTICULAR PURPOSE AND OF ANY OTHER TYPE, WHETHER EXPRESS OR IMPLIED, ARISING BY LAW (STATUTORY OR OTHERWISE) AND WHETHER OR NOT OCCASIONED BY GENERAL LOCK'S NEGLIGENCE.

LIMITATION OF LIABILITY: IN NO EVENT SHALL GENERAL LOCK BE LIABLE FOR ANY SPECIAL, INCIDENTAL, INDIRECT, PUNITIVE, OR CONSEQUENTIAL DAMAGES, INCLUDING ANY DAMAGES OCCASIONED BY GENERAL LOCK'S NEGLIGENCE. IN ADDITION, GENERAL LOCK'S LIABILITY ON ANY CLAIMS FOR DAMAGES OR CLAIMS ARISING OUT OF OR CONNECTED WITH THIS AGREEMENT OR THE SALE, DELIVERY OR USE OF THE PRODUCTS SHALL NOT EXCEED THE PURCHASE PRICE OF THE PRODUCTS AND/OR SERVICES DELIVERED.

ADB and AHB Series Mortise Locks

APPLICATIONS:

For narrow stile glass/aluminum (storefront) door systems. Provides resistance against prying and/or parting forced entry attempts. For greater resistance against physical attack, a latch guard or full length security astragal is recommended.



STANDARD FEATURES:

FUNCTIONS: Deadbolt, Hookbolt

FINISHES: AL-aluminum, DU-duronodic

HANDING: Non-handed, easily reversible

LOCK BODY DIMENSIONS: Width (7/8"), length (6"), case depth (1.63"-1.78" specific to backset)

BACKSET: 31/32", 1-1/8"

LATCHBOLT: 5-ply laminated steel, hardened roller pin, center ply case hardened
 Deadbolt - 5/8" W x 2-7/8" L x 1-3/8" throw
 Hookbolt - 5/8" W x 1-3/8" L x 13/16" throw

FACE PLATE: 1" W x 6-7/8" L
 Supplied with 4 face plates
 Flat aluminum / duronodic
 Radius aluminum / duronodic

CYLINDERS: Accepts standard 1-5/32" diameter mortise cylinder.
 Requires MS A/R type cam.

MOUNTING HARDWARE: Individually boxed with machine screws for mounting, supplied standard with four face plates. Flat-2 ea., aluminum / duronodic finish. Radius-2 ea., aluminum / duronodic finish.

CASE QTY: 25

Actual product may differ from picture shown.

GENERAL LOCK

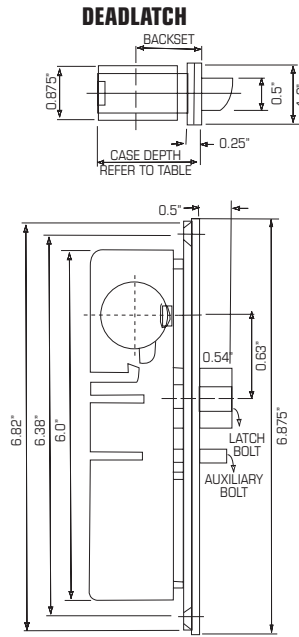
Quality & Value™

— Product Guide 105.0 — | K:1 |

ADL Series Mortise Deadlatch

APPLICATIONS:

For narrow stile glass/aluminum (storefront) door systems. Provides traffic control, key controlled latch hold back for convenient push-pull operation during business hours. For greater security, a latch guard or full length security astragal is recommended.



STANDARD FEATURES:

FUNCTIONS: Deadlatch

FINISHES: AL-aluminum, DU-duronodic

HANDING: Non-handed, easily reversible

LOCK BODY DIMENSIONS: Width (7/8"), length (6"), case depth (1.63"-1.78" specific to backset)

BACKSET: 31/32", 1-1/8"

LATCH: 1/2" W x 1.0" L x 1/2" throw, Zinc alloy latchbolt with Delrin plastic insert, auxiliary bolt zinc diecast, deadlocks latchbolt, and prevents manipulation

FACE PLATE: 1" W x 6-7/8" L
Supplied with 4 face plates
Flat aluminum / duronodic
Radius aluminum / duronodic

CYLINDERS: Accepts standard 1-5/32" diameter mortise cylinder.
Requires MS A/R type cam.

MOUNTING HARDWARE: Individually boxed with machine screws for mounting, supplied standard with four face plates. Flat-2 ea., aluminum / duronodic finish. Radius-2 ea., aluminum / duronodic finish.

CASE QTY: 25

Actual product may differ from picture shown.

GENERAL LOCK

Quality & Value™

AP1 Series Push/Pull Paddle

APPLICATIONS:

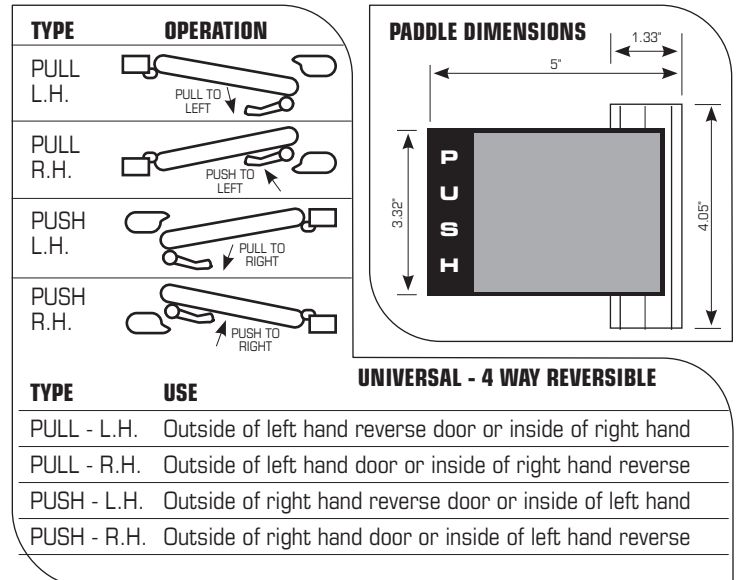
For use with ADL deadlatch and other brands of narrow stile mortise deadlatch. Paddle is four-way reversible. Select application required by referring to chart below. Handing can be reversed on cam plug by removing C- clip and flipping the cam over and reinstalling C- clip.



AP1 Push/Pull Paddle shown

STANDARD FEATURES:

FINISH:	AL-aluminum, DU-duronodic
HANDING:	Non-handed, cam plug included - reversible
PADDLE:	Extruded aluminum
HOUSING:	Zinc alloy
OPERATING ASSEMBLY:	Steel mechanism
STANDARD PACKAGE:	Paddle arm, operating housing, binder posts, cam plug, self adhesive decals, and mounting hardware
CASE QTY:	20



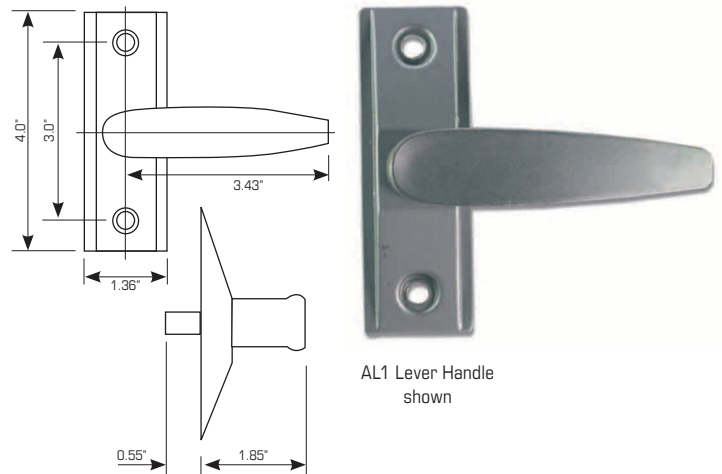
AL1 Series Lever Handle

APPLICATIONS:

For use with ADL deadlatch and other brands of narrow stile mortise deadlatch. Lever is reversible. Handing can be reversed on cam plug by removing C- clip and flipping the cam over and reinstalling C- clip. Cam plug is secured to lever by 2 Hardened-steel pins. Cam plug locks into deadlatch by use of set screw in deadlatch.

STANDARD FEATURES:

FINISH:	AL-aluminum, DU-duronodic
HANDING:	Non-handed easily reversible
LEVER:	Aluminum alloy cast
ESCUTCHEON:	Aluminum 1-3/8" x 4", heavy-duty spring mechanism prevents sagging of lever handle
SPINDLE:	Wrought steel, 1/4" square hardened heat treated
OPERATION:	Turning lever downward will activate deadlatch
STANDARD PACKAGE:	Cam plug included, all mounting screws, templates, and installation instructions
CASE QTY:	30



AL1 Lever Handle shown

GENERAL LOCK

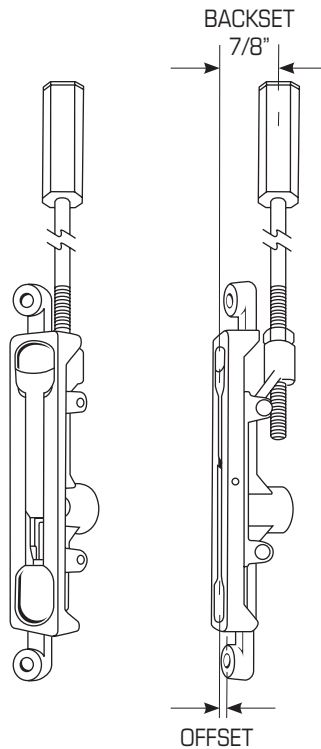
Quality & Value™

— Product Guide 105.0 — | K:3 |

AFB Series Flushbolt

APPLICATIONS:

For use on narrow stile glass/aluminum (storefront) applications. Flush bolts are for use on an opening where one of two doors is inactive.



AFB18 shown

STANDARD FEATURES:

- 15/16" x 4-1/4" radius face
- Positive actuator with 5/8" throw
- 1/8" and 1/4" offset with 7/8" backset
 - AFB18** = 1/8" offset with guide
 - AFB14** = 1/4" offset with guide
- 12" rod length for centerline of face installation
- Square nylon tip fits in 1/2" square hole

CASE QTY: 100

GENERAL LOCK

Quality & Value™

AEXIN Series Lock Indicator

APPLICATIONS:

AEXIN Series Lock Indicator: Provides unmistakable notification of an exit door's "LOCKED" or "OPEN" condition. Under many local building safety codes, this allows the use, in certain occupancies, of a security deadlock instead of less secure panic devices. It includes two permanent adhesive multi-header signs: "THIS DOOR MUST REMAIN UNLOCKED DURING BUSINESS HOURS" and "THIS DOOR TO REMAIN UNLOCKED WHEN THE BUILDING IS OCCUPIED."

THIS DOOR TO REMAIN UNLOCKED

WHEN THE BUILDING IS OCCUPIED

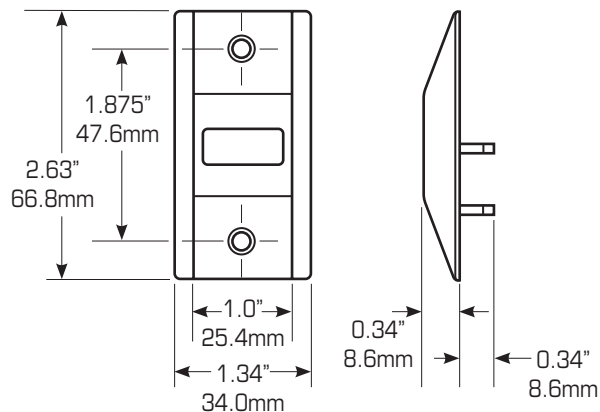
AHS (one of 2 signs shown)



AEXIN (shown in "LOCKED" position)

AEXIN (shown in "OPEN" position)

DIMENSIONS:



MESSAGE PANEL:

"OPEN" appears in black letters on white background when lock is retracted and "LOCKED" in red letters when actuated.

MATERIAL/FINISH:

Indicator escutcheon is zinc alloy in duronodic or Aluminum finish. Header sign is clear aluminum match with black letters.

GENERAL LOCK

Quality & Value™

— Product Guide 105.0 — K:5

A-118 and A-3132 Series Mortise Locks

How to Order - Nomenclature

ADB 118 AL

TYPE

ADB = Deadbolt
ADL = Deadlatch
AHB = Hookbolt

FINISH

AL = Aluminum
DU = Duronodic

Both Radius and Flat Face
Plates Provided (2 of each
finish, total 4)

BACKSET

118 = 1-1/8"
3132 = 31/32"

Accessory Hardware

How to Order - Nomenclature

AP1 AL

TYPE

AEXIN = Exit Indicator
AL1 = Lever Handle
AHS = Signs (2 included, no finish)
AFB18 = Flushbolt, 1/8" offset
AFB14 = Flushbolt, 1/4" offset
AP1 = Push/Pull Paddle

FINISH

AL = Aluminum
DU = Duronodic

GENERAL LOCK

Quality & Value™