

GENERAL LOCK

— CYLINDERS — CORES AND HOUSINGS

INDEX:

Key-in-Lever / Knob Cylinders - KLC 1599 / 1539A

Applications	C:1
Features	C:1

How to Order - Nomenclature

Key-in-Lever / Knob Cylinders - KLC 1599/1539A	C:1
--	-----

Mortise and Rim Cylinders

Applications	C:2
Features	C:2

How to Order - Nomenclature

Mortise and Rim Cylinders.....	C:2
--------------------------------	-----

6-Pin and 7-Pin Interchangeable Cores

Applications	C:3
Features	C:3

How to Order - Nomenclature

6-Pin and 7-Pin Interchangeable Cores.....	C:2
--	-----

Dummy Cylinders, T-Turns, and IC Mortise and Rim Housings

Applications	C:4
Features	C:4

How to Order - Nomenclature

Dummy Cylinders, T-Turns, and Housings.....	C:5
IC Mortise and Rim Housings	C:5

Components

Cams	C:6
Rings and Collars	C:6

TERMS AND CONDITIONS:

LIMITED WARRANTY:

General Lock warrants its cylinders to be free from defects in mechanical operation and workmanship for a period of 1 year from the date of purchase. However, this warranty does not apply to products (i) used for purposes for which they are not designed or intended; (ii) which have been subjected to alteration, abuse, misuse, negligence or accident; (iii) which have been improperly stored, installed, maintained or operated; (iv) which have been used in violation of written instructions provided by General Lock; or (v) which have been subjected to improper temperature, humidity or other environmental conditions (i.e. corrosion). General Lock will, at its option, repair or replace its products, which in its opinion are found to be defective. Products repaired or replaced under this warranty are covered only for the remainder of the original warranty period. THIS WARRANTY IS IN PLACE OF ALL OTHER WARRANTIES, EITHER EXPRESS OR IMPLIED, AND EXCLUDES THE IMPLIED WARRANTIES OF MERCHANTABILITY AND FITNESS FOR A PARTICULAR PURPOSE. The following costs and expenses are not covered by the provisions of this limited warranty: (i) labor costs for the removal and reinstallation of cylinders; (ii) shipping and freight expenses required to return the cylinders to General Lock or an authorized seller; (iii) normal maintenance; and (iv) any other incidental, consequential, indirect, special and/or punitive damages, whether based in contract, warranty, tort (including, but not limited to, strict liability or negligence), patent infringement, or otherwise, even if advised of the possibility of such damages. General Lock's maximum liability under this limited warranty is limited to the original purchase price of the product.

ORDERING / QUOTES:

Possession of prices from General Lock does not commit General Lock to accept any order. General Lock reserves the right to refuse any order and will not be bound to fill any order until it has been accepted by a representative of General Lock and confirmed by a written acknowledgement. Quotations are valid for ninety (90) days following the date of quotation. Orders must be submitted in writing.

CLAIMS:

Every possible care is taken in the final examination and packing of goods, and no complaints can be entertained unless made promptly on receipt of goods. No claim will be allowed for work done by others, consequential damages, or other expenditure, and General Lock's undertaking to repair or replace defective goods is its only liability. No claim for damage, shortage or loss in transit will be considered unless notice in writing is given to the carrier and to General Lock within ten (10) days of receipt of goods.

RETURNS:

Customer must advise General Lock of merchandise to be returned and an RGA will be issued. Goods returned without an RGA will not be accepted by General Lock. Full credit against future purchases or replacements will be made at the option of General Lock if its investigations reveal goods were shipped in error or are defective in workmanship or material. Otherwise, a restocking fee of no less than fifty (50%) percent or \$100 Net (whichever is greater), will be charged to return standard stock products, custom or "special" order items will be handled on a case to case basis.

BACK CHARGES:

General Lock is not responsible for, does not authorize, and will not accept any charges for the cost of labor or materials incurred by anyone other than General Lock for any installation, repair, service or replacement unless incurred with General Lock prior agreement and written consent.

SPECIAL ORDERS:

Products not listed in this catalog are considered 'special order products' and must be authorized by the factory. Some items will require a minimum purchase quantity or additional charges. Unless quoted differently from the Factory, standard factory lead times of 8-12 weeks will apply. Orders for 'special order products' are non-cancelable and can not be returned unless defective.

Key-in-Lever / Knob Cylinders - KLC 1599 / 1539A

Applications, Features, and How to Order - Nomenclature

KEY-IN-LEVER / KNOB CYLINDERS:

FEATURES:

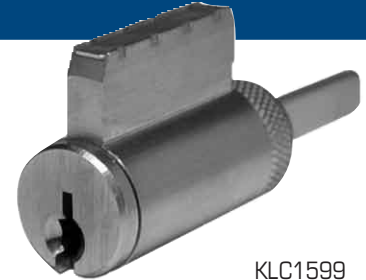
KLC1599 / KLC1539A:

- 1599 fits knobs, levers, and deadbolts
- 1539A specifically for Arrow® style knobs
- Solid brass construction
- Accepts original pins when pinning to original master key system
- Available in 10 keyways, 2 finishes (26D and 4)
- 2 key blanks
- 1599 has screw-on end cap
- 1539A has clip-on style tailpieces
- 5 tailpieces
- Pinned 5, drilled 6
- Available KD or O-Bitted

Key-In-Knob / Lever / Deadbolt

APPLICATIONS:

After-market installation for keyway change or replacement of a malfunctioning cylinder. Integrated into existing master key system or keyed with new system.



KLC1599

Arrow® Style Knob Cylinders

APPLICATIONS:

For use as replacement cylinder in Arrow® style knob locks: H, S, L, and M Series.

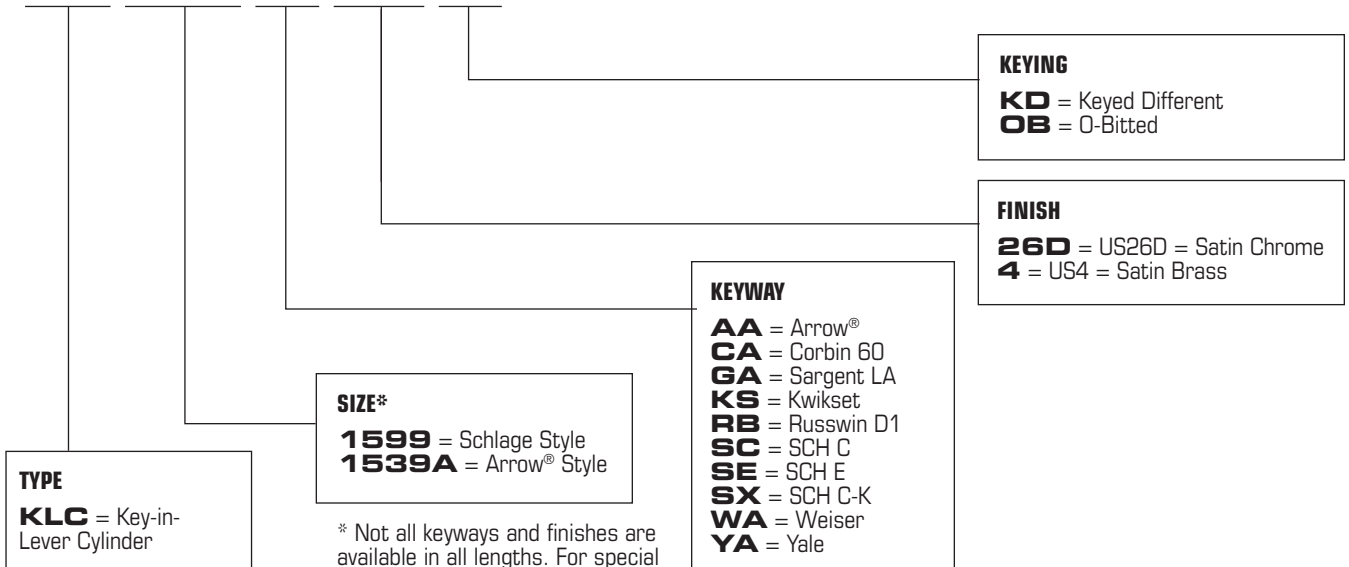


KLC1539

Key-in-Lever / Knob Cylinders - KLC 1599 / 1539A

How to Order - Nomenclature

KLC 1599 AA 26D KD



* Not all keyways and finishes are available in all lengths. For special orders, please call your distributor for lead times and pricing info.

Mortise and Rim Cylinders

Applications, Features, and How to Order - Nomenclature

MORTISE AND RIM CYLINDERS:

FEATURES:

MC / RC:

Solid brass construction

Mortise cylinders come in 4 lengths (15/16", 1", 1-1/8", 1-1/4")

10 keyways

3 finishes (3, 10B, and 26D)

2 key blanks

Keyed alike in pairs or keyed different

15/16" and 1" are drilled 5, pinned 5

1-1/8", 1-1/4", and rim cylinders are pinned 5, drilled 6

Accepts original pins when pinning to original master key system

Mortise Cylinders

APPLICATIONS:

After-market replacement, master keying, and rekeying.

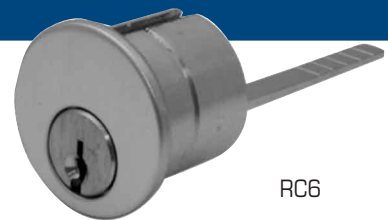


MC100

Rim Cylinders

APPLICATIONS:

After-market replacement, master keying, and rekeying.

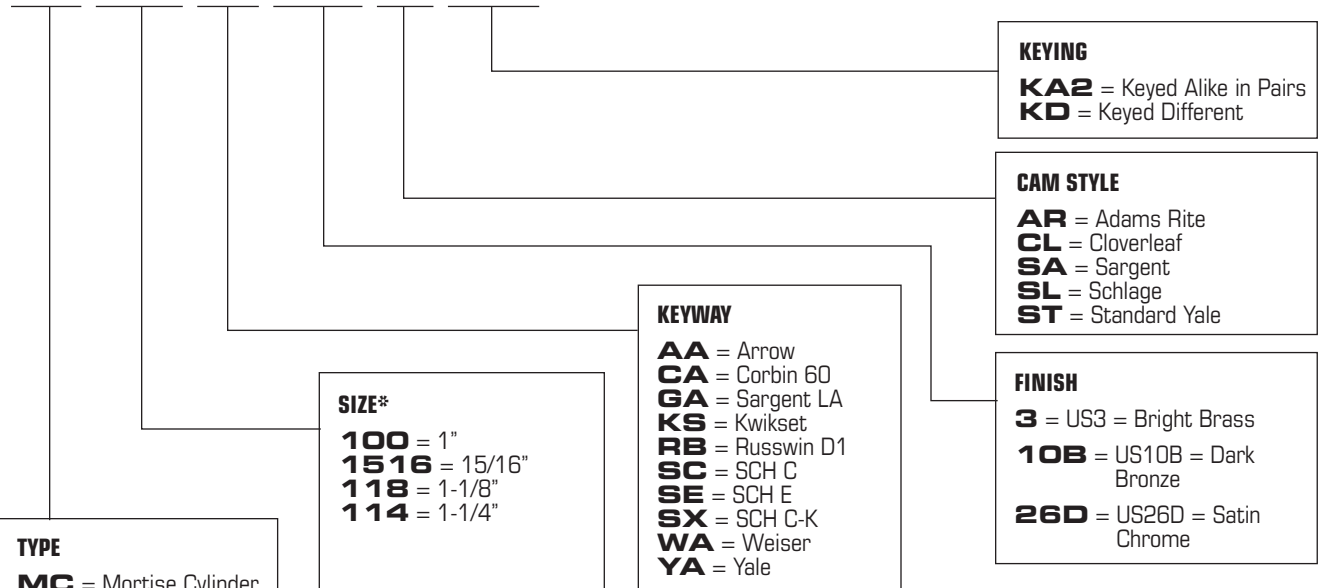


RC6

Mortise and Rim Cylinders

How to Order - Nomenclature

MC 118 SC 10B ST KA2



* Not all keyways and finishes are available in all lengths. For special orders, please call your distributor for lead times and pricing info.

6-Pin and 7-Pin Interchangeable Cores

Applications, Features, and How to Order - Nomenclature

6-PIN AND 7-PIN INTERCHANGEABLE CORES:

FEATURES:

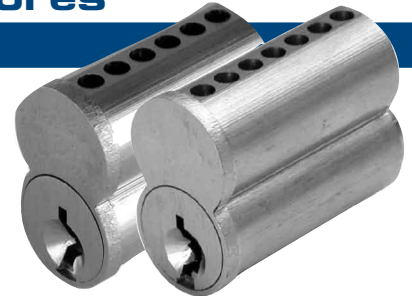
IC6 / IC7:

- ____ Solid brass construction
- ____ Accepts original pins when pinning to existing master key system
- ____ Available in 13 keyways
- ____ 2 finishes (26D and 4)
- ____ Cap style
- ____ Available 6-pin or 7-pin. Uncombined

Interchangeable Cores

APPLICATIONS:

After-market installation for replacement of a malfunctioning small format interchangeable core cylinder. Integrated into existing master key system or keyed with brand new system.



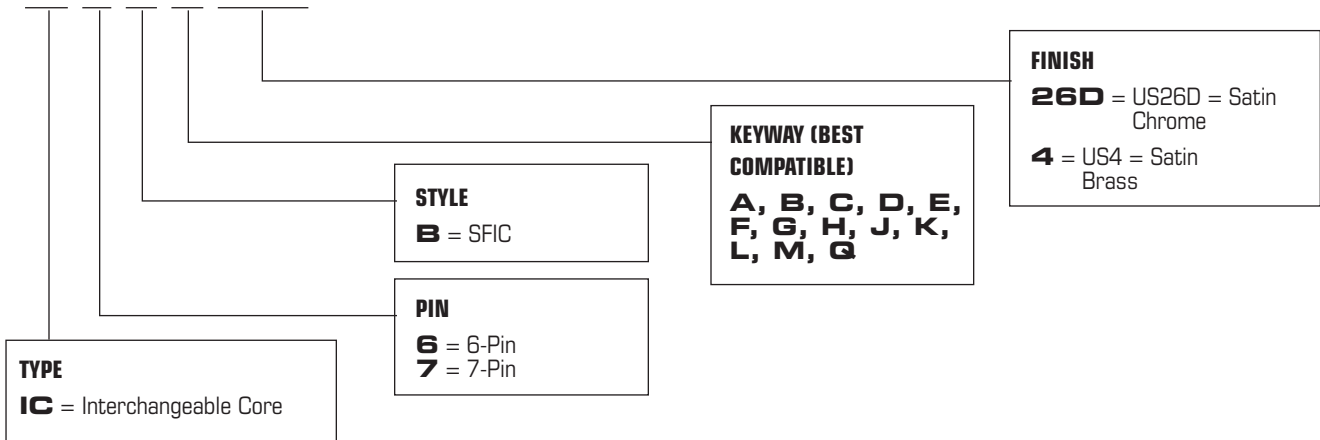
6-pin

7-pin

6-Pin and 7-Pin Interchangeable Cores

How to Order - Nomenclature

IC 6 B A 26D



Dummy Cylinders, T-Turns, and IC Mortise and Rim Housings

Applications and Features

DUMMY CYLINDERS, T-TURNS, AND HOUSINGS:

FEATURES:

MC-IC / RC-IC:

Compatible with cores from Arrow®, Best®, Falcon®, and KSP®

Removable cam design allows changing of cams (cams available separately)

Rim housing features solid brass construction

Straight and tapered mortise housings available

3 finishes (3, 10B, and 26D)

MC-DC / MC-TT:

Solid brass construction

4 lengths (15/16", 1", 1-1/8", 1-1/4")

3 finishes (3, 10B, and 26D)

APPLICATIONS:

After-market replacement.

Dummy Cylinders



MC-DC

Thumb-Turn Cylinders



MC-TT

IC Mortise Housing



MCT-IC



MC-IC

IC Rim Housing



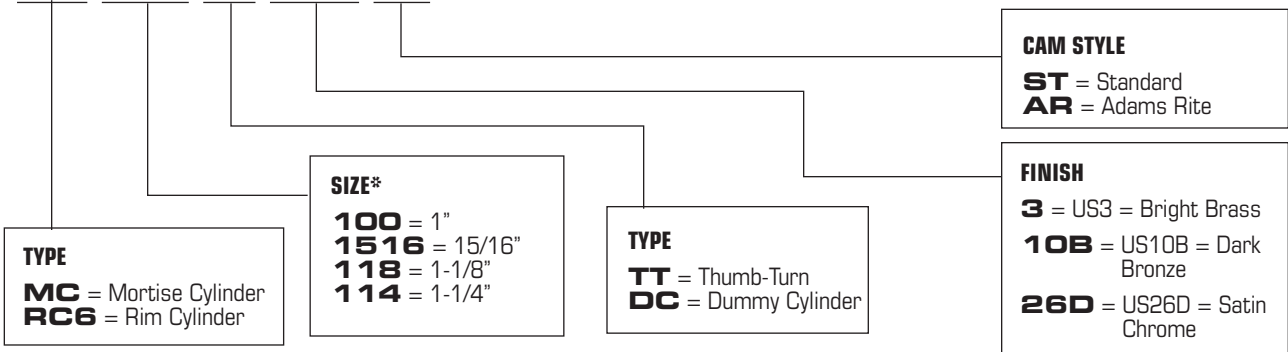
RC-IC

Dummy Cylinders, T-Turns, and IC Mortise and Rim Housings

How to Order - Nomenclature

Dummy Cylinders and T-Turns

MC 118 TT 10B ST



TYPE
MC = Mortise Cylinder
RC6 = Rim Cylinder

SIZE*
100 = 1"
1516 = 15/16"
118 = 1-1/8"
114 = 1-1/4"

TYPE
TT = Thumb-Turn
DC = Dummy Cylinder

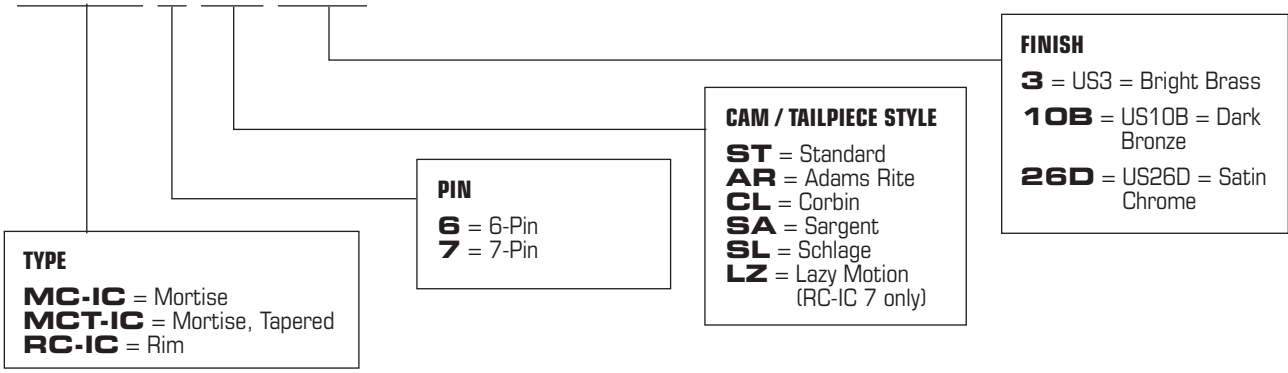
CAM STYLE
ST = Standard
AR = Adams Rite

FINISH
3 = US3 = Bright Brass
10B = US10B = Dark Bronze
26D = US26D = Satin Chrome

* Not all keyways and finishes are available in all lengths. For special orders, please call your distributor for lead times and pricing info.

IC Mortise and Rim Housings

MC-IC 6 AR 10B



TYPE
MC-IC = Mortise
MCT-IC = Mortise, Tapered
RC-IC = Rim

PIN
6 = 6-Pin
7 = 7-Pin

CAM / TAILPIECE STYLE
ST = Standard
AR = Adams Rite
CL = Corbin
SA = Sargent
SL = Schlage
LZ = Lazy Motion (RC-IC 7 only)

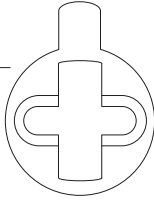
FINISH
3 = US3 = Bright Brass
10B = US10B = Dark Bronze
26D = US26D = Satin Chrome

Cylinders, Cores, and Housings - Components

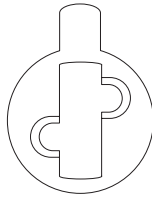
Cams, Rings, and Collars

CAMS:

Adams Rite
AR CAM
Adams Rite cam
for standard
mortise cylinder



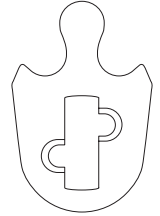
Adams Rite
AR-IC CAM
Adams Rite cam
for IC mortise
housing



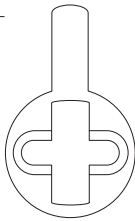
Cloverleaf
CL CAM
Cloverleaf cam
for mortise
cylinder



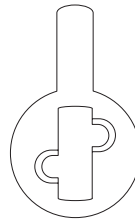
Cloverleaf
CL-IC CAM
Cloverleaf cam
for IC mortise
housing



Sargent
SA CAM
Sargent cam for
mortise cylinder



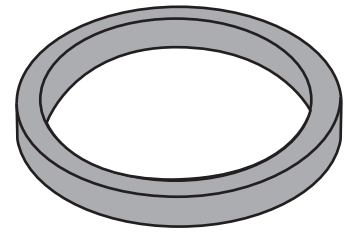
Sargent
SA-IC CAM
Sargent cam
for IC mortise
housing



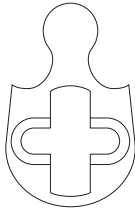
RINGS AND COLLARS:

Solid Collar
CR-1
5/32" solid
cylinder collar

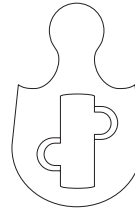
Finish:
3, 10B, 26D



Schlage
SL CAM
SCH L cam for
mortise cylinder

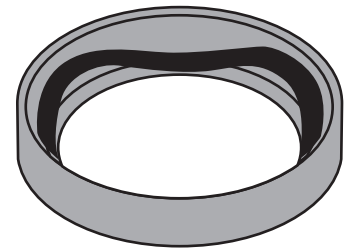


Schlage
SL-IC CAM
SCH L cam for IC
mortise housing

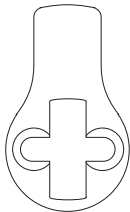


Adjustable Collar
CR-3
1/4" adjustable
mortise cylinder
collar

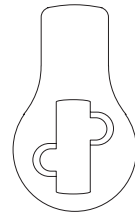
Finish:
3, 10B, 26D



Standard Yale
ST CAM
Standard Yale
cam for mortise
cylinder



Standard Yale
ST-IC CAM
Standard Yale
cam for IC
mortise housing



Cylinder Ring
CR-2
1/8" mortise
cylinder ring

Finish:
3, 10B, 26D

