



MC380-36 Camera Users Manual and Installation Instructions

I. General

The MC380-36 Camera is a mini size, full functioned CCD Camera. Its stylish appearance can be applied as per installer's ideal locations. The metal case camera can be mounted either on the ceiling or on the wall easily. The EM380-36 uses high sensitive 1/3" color interline transfer CCD sensor with DSP. The camera is featured with Auto Electronic Shutter, Automatic Gain Control, and Auto White Balance function.

II. Precautions

- Do not expose the camera to humidity and dust. If the camera is mounted outdoor, a camera housing is required.
- Handle with care. This camera consists of high sensitive parts. Do not disassemble it or place it on an unstable base.
- Do not touch the surface of CCD sensor by hand directly. When the camera is not in use, put the cover cap on the lens.
- Never face the camera toward the sun.
- Use proper power source otherwise the camera will not function correctly. Operate on DC +12V (Use a regulated power source only).

III. Installation Instructions

A. In application, the metal case camera can be installed in the following four positions:

- 1) Ceiling mount
- 2) Floor mount
- 3) Wall mount, aim to right
- 4) Wall mount, aim to left



B. The MC380 is available in either board lens application or manual lens application. When you use the manual lens, please pay attention whether it is C mount or CS mount. If CS mount lens is used, please also remove the C Mount Ring (the 5mm thick ring on top of the lens mount).

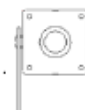
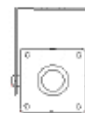
C. In order to get the correct picture, please always keep the cable connector on the upper-right corner at the back panel.

1) Ceiling Mount :

The metal case camera are set in the actual position when the shipment is made. They are ready to be installed.

2) Floor Mount :

Rotate the metal case in 180-degree so that the connector at the back panel is on the upper-right corner.





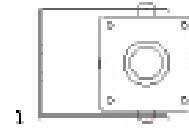
3) *Wall Mount, aim to right :*

Remove the metal case from the supporting bracket by using screw driver to loosen the two screws, which connect the case to the bracket. Turn the metal case in 90-degree and mount into the supporting bracket again by changing the screw holes, and make sure the connector at the back panel is on the upper-right corner.



4) *Wall Mount, aim to left:*

Remove the metal case from the supporting bracket by using screw driver to loosen the two screws, which connect the iron case to the supporting bracket. Turn the metal case in 90-degree and mount into the supporting bracket again by changing the screw holes, and make sure the connector at the back panel is on the upper-right corner.



D. Connect the BNC connector of the camera to a color monitor, or other video device through a 75 ohm type coaxial cable with BNC female connector at cable extension.

E. Connect the DC+12V regulated power source of the camera (DC Jack) to the DC12V Power-in jack with 2mm, center+, outer- plug.

F. Once the image appears on the monitor, loosen the fixing screw located at the lens mount then adjust the focus and diaphragm of the lens to obtain the best picture. When the ideal picture is obtained, secure the lens mount fixing screw firmly again.



IV. Specifications

Pickup device:	1/4" interline transfer CCD with DSP
Picture element:	512 x 492 (NTSC) 500 x 580 (PAL)
Horizontal resolution:	380 TV Lines
Sensitivity:	2 lux/F=2.0
S/N ratio:	Over 45 dB
Electronic shutter:	Up to 1/100,000
Auto white balance:	Yes
Gamma correction:	0.45
Video output:	1.0Vp-p, 75 ohm
Power source:	12VDC \pm 10%, 150mA
Sync. Mode:	Internal Sync.
Lens mount:	M12 x P0.5 (Board Lens/ Pinhole Lens) C or CS (Manual Lens)
Dimension:	45 x 59 x 31 mm
Operating temperature:	-10°C to +50°C