



DCB/W-480 Camera Users Manual and Installation Instructions

I. General

The DCB480 Camera is a compact, full functioned CCD Camera. Its stylish appearance can be applied as per installer's ideal locations. These dome cameras can be mounted either on the ceiling or on the wall easily. The DCB480 uses high sensitive 1/3" color interline transfer CCD sensor with DSP. The camera is featured with Auto Electronic Shutter, Automatic Gain Control, and Auto White Balance function.

II. Precautions

- Do not expose the camera to humidity and dust. If the camera is mounted outdoor, a camera housing is required.
- Handle with care. This camera consists of high sensitive parts. Do not disassemble it or place it on an unstable base.
- Do not touch the surface of CCD sensor by hand directly. When the camera is not in use, put the cover cap on the lens.
- Never face the camera toward the sun.
- Use proper power source otherwise the camera will not function correctly. Operate on DC +12V (Use a regulated power source only).

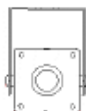
III. Installation Instructions

1. Remove the plastic dome cover
2. Loosen the two screws of the supporting bracket to remove the camera body.
3. Using four screws, fix the camera base on the ceiling.
4. Put the camera body back to the supporting bracket, the connector of the back panel should always be the left-bottom corner of the camera to have the correct image.
5. Tighten the two screws to fix the camera. See the below back panel illustrations.

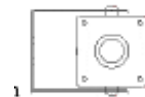
The DCB480 can be installed in the following four positions:

- 1) Ceiling mount
- 2) Floor mount
- 3) Wall mount, aim to right
- 4) Wall mount, aim to left

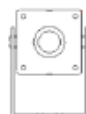
1) *Ceiling Mount*



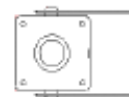
3) *Wall Mount, aim to right*



2) *Floor Mount*



4) *Wall Mount, aim to left:*





6. Connect the DC+12V regulated power source of the camera (DC Jack) to the DC12V Power-in jack with 2mm, center+, outer- plug.
7. Once the image appears on the monitor, loosen the fixing screw located at the lens mount then adjust the focus and diaphragm of the lens to obtain the best picture. When the ideal picture is obtained, secure the lens mount fixing screw firmly again.
8. Put the plastic cover back on the dome camera.

IV. Specifications

Pickup device:	1/3" interline transfer CCD with DSP
Picture element:	752 x 582 (NTSC) 768 x 494 (PAL)
Horizontal resolution:	480 TV Lines
Sensitivity:	0.2 lux/F=2.0
S/N ratio:	Over 45 dB
Electronic shutter:	Up to 1/100,000
Auto white balance:	Yes
Gamma correction:	0.45
Video output:	1.0Vp-p, 75 ohm
Power source:	12VDC \pm 10%, 150mA
Sync. Mode:	Internal Sync.
Lens mount:	Board lens f+3.6mm, F=2.0
Dimension:	88 OD x 80 (H) mm